

## Investment Objective

To achieve long term capital growth primarily through investment in equities (and their related securities) of UK companies which the Investment Manager believes to be undervalued or where the potential has not been recognised by the market

## Investment Company Facts

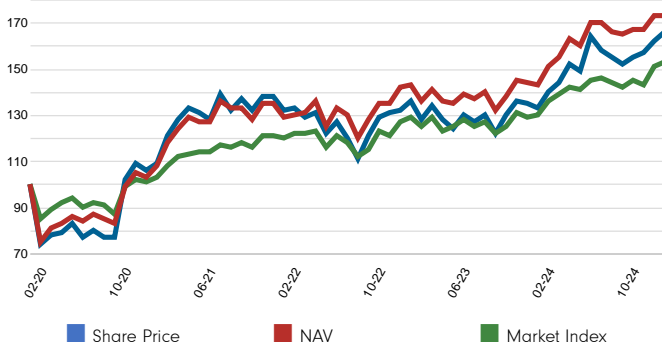
**Launch date:** 17.11.94  
**Portfolio manager:** Alex Wright, Jonathan Winton  
**Appointed to trust:** 01.09.12, 03.02.20  
**Years at Fidelity:** 24, 20  
**Total Net Assets (TNA):** £ 1,140m  
**Ordinary shares in Issue:** 323,298,920  
**Share price:** 331.50p  
**NAV:** 352.61p  
**Discount:** 5.99%  
**Gross Market Gearing:** 10.6%  
**Net Market Gearing:** 10.6%

## Performance comparator

**Market Index:** FTSE All Share Index

The same index is used in the positioning tables on this factsheet. Past performance is not a reliable indicator of future results. The value of investments can go down as well as up and you may get back less than you invested.

## Cumulative performance in GBP (%)



Performance is shown for the last five years (or since launch for funds launched within that period).

## Performance to 28.02.25 in GBP (%)

	1m	3m	YTD	1yr	3yr	5yr	Since 17.11.94*
Share Price Cumulative Growth	2.5	6.9	5.9	24.8	25.4	66.1	2845.2
NAV Cumulative Growth	0.2	3.7	3.6	21.4	33.9	73.3	2920.0
Index Cumulative Growth	1.3	5.7	6.9	18.4	27.7	53.4	743.8
Share Price Annualised Growth	-	-	-	-	7.8	10.7	11.8
NAV Annualised Growth	-	-	-	-	10.2	11.6	11.9
Index Annualised Growth	-	-	-	-	8.5	8.9	7.3

Basis: bid-bid with income reinvested, in GBP, net of fees.

Market indices are sourced from RIMES and other data is sourced from third-party providers such as Morningstar.

\*Performance commencement date.

## Key Risks

The value of investments and the income from them can go down as well as up, so you may get back less than you invest. Overseas investments are subject to currency fluctuations. This trust invests more heavily than others in smaller companies, which can carry a higher risk because their share prices may be more volatile than those of larger companies and the securities are often less liquid. This trust uses financial derivative instruments for investment purposes, which may expose it to a higher degree of risk and can cause investments to experience larger than average price fluctuations. The shares in the investment trust are listed on the London Stock Exchange and their price is affected by supply and demand. The investment trust can gain additional exposure to the market, known as gearing, potentially increasing volatility.

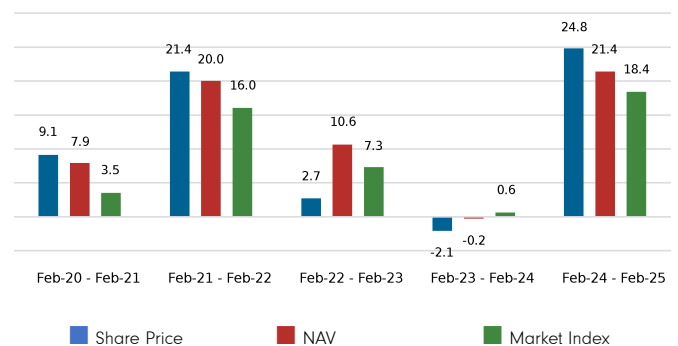
## Portfolio Manager Commentary

UK equities continued to advance in February, despite several geopolitical and trade policy developments. Investors grew more confident in the prospect of a ceasefire in Ukraine, while US President Donald Trump's proposal to impose tariffs on steel, automobiles, pharmaceuticals, and lumber imports weakened sentiment. The Bank of England delivered a widely expected 25 basis-point rate cut to 4.5%, its third reduction since August, although two committee members had favoured a larger 0.5% cut. At a sector level, defensive sectors such as health care and telecommunications led the way.

Despite their improved performance over recent years, UK equities still look cheap relative to other markets, and reasonable on an absolute basis. We believe that the combination of attractive valuations and the large divergence in performance between different parts of the market create good opportunities for attractive returns from UK stocks on a three-to-five-year view. Although the UK market continues to remain largely unloved by domestic investors, its attractive valuations are being recognised by other market participants such as overseas corporates and private equity firms who have been amongst the biggest bidders in the UK market. Underlining this interest has been the sharp spike in M&A activity which remains a key feature in the Trust.

On a rolling 12-month basis, the Trust recorded NAV and share price returns of 21.4% and 24.8% respectively, compared to 18.4% for the index.

## Performance for 12 month periods in GBP (%)



### Equity Exposure % Total Net Assets (% TNA)

	Exposure (% TNA)
Gross Market Exposure	110.6
Net Equity	108.7
Other	2.2
Uninvested Cash	0.0

Notes on Portfolio Construction and a description of how data is calculated and presented are on page 3. Definitions of the terms used in the Equity Exposure table are in the Glossary.

### Sector/Industry Exposure (% TNA)

ICB Industry	Fund	Index	Relative
Financials	30.5	27.9	2.6
Industrials	22.5	12.1	10.4
Consumer Staples	15.7	13.7	1.9
Consumer Discretionary	13.5	11.1	2.4
Health Care	7.1	11.6	-4.5
Basic Materials	4.9	5.7	-0.8
Utilities	4.5	3.6	0.9
Energy	4.4	9.5	-5.1
Real Estate	2.6	2.3	0.3
Technology	1.5	1.3	0.3
Telecommunications	1.5	1.1	0.3
<b>Total Sector Exposure</b>	<b>108.7</b>	<b>100.0</b>	
Other Index / Unclassified	0.0	0.0	
<b>Total Equity Exposure</b>	<b>108.7</b>	<b>100.0</b>	

### Top Positions (% TNA)

	ICB Industry
STANDARD CHARTERED PLC	Financials
IMPERIAL BRANDS PLC	Consumer Staples
DCC PLC	Industrials
RECKITT BENCKISER GROUP PLC	Consumer Staples
NATWEST GROUP PLC	Financials
AIB GROUP PLC	Financials
DIRECT LINE INSURANCE GRUP PLC	Financials
JUST GROUP PLC	Financials
BRITISH AMERICAN TOBACCO PLC	Consumer Staples
NATIONAL GRID PLC	Utilities

### Top Overweight Positions (% TNA)

	Fund	Index	Relative
DCC PLC	3.6	0.2	3.4
STANDARD CHARTERED PLC	4.2	1.0	3.2
IMPERIAL BRANDS PLC	4.0	0.9	3.1
AIB GROUP PLC	3.1	0.0	3.1
DIRECT LINE INSURANCE GRUP PLC	3.0	0.1	2.9
JUST GROUP PLC	2.8	0.1	2.7
KELLER GROUP PLC	2.7	0.0	2.7
COATS GROUP PLC	2.6	0.1	2.5
GLENVEAGH PROPERTIES PLC	2.2	0.0	2.2
CAIRN HOMES PLC	2.2	0.0	2.2

### Positions Concentration (% TNA)

	Fund	Index
Top 10	33.1	40.2
Top 20	55.7	57.6
Top 50	91.3	77.1

### Market Capitalisation Exposure (% TNA)

GBP	Fund	Index	Relative
FTSE 100	40.1	86.6	-46.6
FTSE 250	38.5	11.7	26.8
FTSE Smallcap	7.2	1.6	5.6
Non FTSE	23.0	0.0	23.0
<b>Total Market Cap Exposure</b>	<b>108.7</b>	<b>100.0</b>	
Index / Unclassified	0.0	0.0	
<b>Total Equity Exposure</b>	<b>108.7</b>	<b>100.0</b>	

### Country Exposure (% TNA)

	Fund	Index	Relative
United Kingdom	92.5	100.0	-7.5
Ireland	5.9	0.0	5.9
France	2.3	0.0	2.3
Switzerland	2.1	0.0	2.1
Greece	1.4	0.0	1.4
Bermuda	1.3	0.0	1.3
Italy	1.0	0.0	1.0
Australia	1.0	0.0	1.0
Kazakhstan	0.8	0.0	0.8
Peru	0.5	0.0	0.5
Others	0.1	0.0	0.1
<b>Total Geographic Exposure</b>	<b>108.7</b>	<b>100.0</b>	
Other Index / Unclassified	0.0	0.0	
<b>Total Equity Exposure</b>	<b>108.7</b>	<b>100.0</b>	

Geographic Location	Fund	Index	Relative
United Kingdom	4.2	1.0	3.2
United Kingdom	4.0	0.9	3.1
United Kingdom	3.6	0.2	3.4
United Kingdom	3.5	1.4	2.0
United Kingdom	3.4	1.3	2.1
Ireland	3.1	0.0	3.1
United Kingdom	3.0	0.1	2.9
United Kingdom	2.8	0.1	2.7
United Kingdom	2.8	2.5	0.3
United Kingdom	2.8	1.9	0.9

### Top Underweight Positions (% TNA)

	Fund	Index	Relative
HSBC HOLDINGS PLC	0.0	6.8	-6.8
SHELL PLC	0.0	6.5	-6.5
ASTRAZENECA PLC	1.4	7.2	-5.7
UNILEVER PLC	0.0	4.4	-4.4
RELX PLC	0.0	2.8	-2.8
BP PLC	0.0	2.8	-2.8
LONDON STOCK EXCHANGE GROUP PLC	0.0	2.3	-2.3
RIO TINTO PLC	0.0	2.0	-2.0
DIAGEO PLC	0.0	1.9	-1.9
COMPASS GROUP PLC	0.0	1.9	-1.9

Full portfolio listings, with the appropriate time lag as agreed by the Board, are available on request from Fidelity Investment Trusts.  
 Figures may not always sum to totals due to rounding

## Approach and Style

There are two key elements to Alex's investment approach:

### 1. Downside risk management

Alex looks for companies where there is limited downside risk. In other words, he wants to invest in companies that have exceptionally cheap valuations or some kind of asset that should stop their share prices falling below a certain level. This can be anything from inventory to intellectual property.

### 2. Unrecognised growth potential

Alex looks for events that could significantly improve a company's earning power, but are not currently reflected in the company's share price. These include changes in the company's competitors or market, a new product line or an expansion into new business areas.

What's more, the trust benefits from in-depth company and valuation analysis, drawing on the extensive Fidelity research platform.

## Portfolio Construction – Explained

This factsheet contains information about the composition of the fund at a particular point in time. It aims to help you understand how the fund manager is positioned to achieve the fund's objectives.

The Equity Exposure table provides an overall view of the fund. Net Equity represents - in percentage terms - how much of the fund is invested in the market, netting off long and short positions. The higher the figure, the more the fund will take part in any market rises (or falls). It is important to note that Net Equity can be greater than 100% (for example if the manager is using derivative contracts) and when it is, the portfolio may be described as geared.

The exposure and positioning tables on page 2 break the fund down into a number of different views, each providing a different perspective on the fund's investments.

## Administrative & Dealing Information

**Financial Year End:** 31st August  
**Reference currency:** UK Sterling (GBP)  
**Company domicile:** United Kingdom  
**Company legal structure:** Investment Trust  
**Capital guarantee:** No  
**ISIN:** GB00BWXC7Y93  
**SEDOL:** BWXC7Y9  
**Bloomberg:** FSV LN  
**Distribution frequency:** Bi Annual  
**Charges made to income or capital:** Income  
**Ongoing Charges:** 0.70%  
**Annual Management Charge:** 0.60% (net assets)

## Independent Assessment

Information in this section is the latest available at date of publication. Further details can be found in the Glossary section of this factsheet. As some ratings agencies may use past performance to produce their assessments, these are not a reliable indicator of future results.

**Morningstar rating™ :** \*\*\*\*

## How data is calculated and presented

Portfolio composition data has been calculated and presented according to several general principles, which are listed below.

- **Aggregation :** all investments, including derivatives, linked to a particular issuing company have been combined to form a total percentage holding for each company. The aggregate holding is referred to in this factsheet as a position. Where a company is listed in two separate countries, each listing may be classified as a separate issuing company. Exchange Traded Funds (ETFs) and derivatives on ETFs are treated as individual securities – ie not aggregated.
- **Categorisation :** for investments that have underlying securities we use the attributes of the underlying issuing company or common share to determine the appropriate sector, market capitalisation band and geographic area.
- **Derivatives:** all derivatives are included on an exposure basis and, where necessary, are delta-adjusted. Delta-adjusting expresses derivatives in terms of the equivalent number of shares that would be needed to generate the same return.
- **"Basket" securities:** securities that represent a number of company shares – like index futures or options – are allocated to categories (such as country) whenever possible. Otherwise they are included in the "Other Index / Unclassified" category.

## Glossary / Additional Notes

### Equity Exposure notes

#### GROSS MARKET EXPOSURE

Gross Market Exposure is the total of long exposures, plus the total of short exposures, and less the total of exposures hedging the portfolio, expressed as a percentage of shareholders' funds (Total Net Assets).

#### NET EQUITY

The net positive exposure to the market with short and hedge positions subtracted from long positions.

#### OTHER

The value of any non-equity investments (excluding cash funds) expressed as a percentage of TNA.

#### UNINVESTED CASH

This is 100% minus the fund's Net Equity exposure and minus Other. This leaves any residual cash exposure that is not invested in shares or via derivatives.

#### Investment Company Facts

#### NAV

The total value of a company's assets less the total value of its liabilities is its net asset value (NAV). For valuation purposes it is common to divide net assets by the number of shares in issue to give the net assets per share. NAV calculations can include or exclude current financial year income. For the purposes of this factsheet, they are valued with assets including income and costs and with debt valued at the market.

#### PREMIUM

If the share price of an investment company is higher than the net asset value (NAV) per share, the company is said to be trading at a premium. The premium is shown as a percentage of the NAV.

#### DISCOUNT

If the share price of an investment company is lower than the net asset value (NAV) per share, the company is said to be trading at a discount. The discount is shown as a percentage of the NAV.

#### GEARING

Gearing is the Market Exposure figure (either gross or net) expressed in excess of Total Net Assets. It represents the additional exposure to the market above Shareholders' Funds.

#### FAIR VALUE

The fair value of investments is initially taken to be their cost and is subsequently measured as follows: Listed investments are valued at bid prices, or last market prices, depending on the convention of the exchange on which they are listed; and

Unlisted investments are investments which are not quoted, or are not frequently traded, are stated at the Directors' best estimate of fair value and take account of the cost of the investment, recent arm's length transactions in the same or similar investments and financial performance of the investment since purchase.

#### General notes

#### TOTAL NET ASSETS (TNA)

The Company's total assets minus its total liabilities - also known as Shareholders' Funds. It represents the amount by which a company is financed through common and preferred shares.

#### INDEX

The index used in the positioning tables on page 2 is the index defined in the Performance Comparator section on page 1.

#### TOP NET LONG POSITIONS

Those companies in which the largest percentages of the investment company's total net assets are effectively invested (equity positions). Positions in other funds - including ETFs (Exchange Traded Funds) - can appear in this table, but index derivatives form part of an "Other Index / Unclassified" category which will not appear.

#### TOP OVERWEIGHT & UNDERWEIGHT POSITIONS

Those equity positions which have the largest active weight relative to the index. Positions in other funds - including ETFs (Exchange Traded Funds) - can appear in this table, but index derivatives form part of an "Other Index / Unclassified" category which will not appear. In the underweight table, any short position names have been withheld in line with Fidelity's disclosure policy.

#### NET LONG POSITIONS CONCENTRATION

Illustrates the weight of the top 10, 20 and 50 equity positions in the Company and the weight of the top 10, 20 and 50 equity positions in the index. It does not attempt to show the coincidence of security ownership between Company and Index. The sector/industry classification used (i.e. GICS, ICB, TOPIX and IPD) varies by fund. Full descriptions can be found below.

## Glossary / Additional Notes

### ONGOING CHARGES

Ongoing Charges are taken from the Company's most recent Annual Report and represents the total of investment management fees and other expenses of the Company (excluding transaction costs, interest payments, tax and non-recurring expenses) expressed as a percentage of the average net asset value throughout the financial year.

### SECTOR INDUSTRY CLASSIFICATION

GICS: Global Industry Classification Standard (GICS) was developed by Standard & Poor's and MSCI Barra. GICS consists of 11 sectors, 24 industry groups, 68 industries and 157 sub-industries.

More information is available at <http://www.standardandpoors.com/indices/gics/en/us>

ICB: The Industry Classification Benchmark (ICB) is an industry classification developed by Dow Jones and FTSE. It is used to segregate markets into sectors within the macroeconomy. The ICB uses a system of 10 industries, partitioned into 20 supersectors, which are further divided into 41 sectors, which then contain 114 subsectors.

More information is available at <http://www.icbenchmark.com/>

## Legal Information

Fidelity International refers to the group of companies which form the global investment management organisation that provides information on products and services in designated jurisdictions outside of North America.

Fidelity only offers information on its own products and services and does not provide investment advice based on individual circumstances.

This communication is not directed at, and must not be acted upon by persons inside the United States and is otherwise only directed at persons residing in jurisdictions where the relevant funds are authorised for distribution or where no such authorisation is required.

Unless otherwise stated, all views are those of Fidelity.

Reference in this document to specific securities or funds should not be construed as a recommendation to buy or sell them, but is included for the purposes of illustration only. Investors should also note that the views expressed may no longer be current and may have already been acted upon by Fidelity. The research and analysis used in this documentation is gathered by Fidelity for its use as an investment manager and may have already been acted upon for its own purposes.

Fidelity, Fidelity International, the Fidelity International logo and F symbol are trademarks of FIL Limited.

This fund is managed by FIL Investments International.

Morningstar annualised growth rates, total return, sector median performance and ranks - Data Source - © 2025 Morningstar, Inc. All Rights Reserved. The information contained herein: (1) is proprietary to Morningstar and/or its content providers; (2) may not be copied or distributed; and (3) is not warranted to be accurate, complete or timely. Neither Morningstar nor its content providers are responsible for any damages or losses arising from any use of this information.

Before investing you should read the latest Annual Report and Key Features Document, which are available from [www.fidelity.co.uk/its](http://www.fidelity.co.uk/its).

Issued by FIL Investment Services (UK) Limited, a firm authorised and regulated in the UK by the Financial Conduct Authority. FIL Investment Services (UK) Limited is registered in England and Wales under the company number 2016555. The registered office of the company is Beech Gate, Millfield Lane, Lower Kingswood, Tadworth, Surrey, KT20 6RP, United Kingdom.