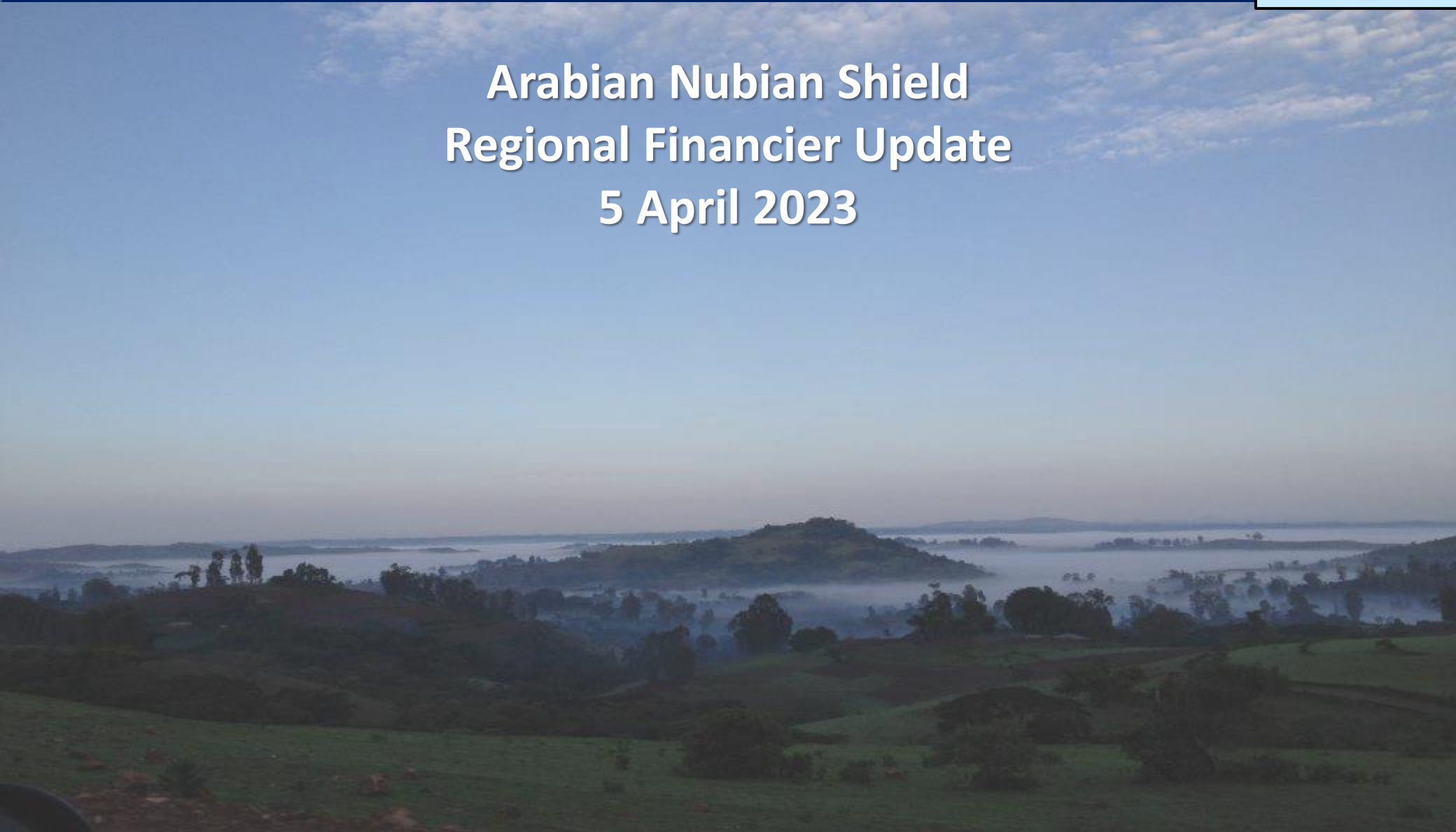


KEFI

GOLD + COPPER



Arabian Nubian Shield Regional Financier Update 5 April 2023



The information contained in this document (“Presentation”) has been prepared by KEFI Gold and Copper plc (the “Company”). While the information contained herein has been prepared in good faith, neither the Company nor any of its shareholders, directors, officers, agents, employees or advisers give, have given or have authority to give, any representations or warranties (express or implied) as to, or in relation to, the accuracy, reliability or completeness of the information in this Presentation, or any revision thereof, or of any other written or oral information made or to be made available to any interested party or its advisers (all such information being referred to as “Information”) and liability therefore is expressly disclaimed. Accordingly, neither the Company nor any of its shareholders, directors, officers, agents, employees or advisers take any responsibility for, or will accept any liability whether direct or indirect, express or implied, contractual, tortious, statutory or otherwise, in respect of, the accuracy or completeness of the Information or for any of the opinions contained herein or for any errors, omissions or misstatements or for any loss, howsoever arising, from the use of this Presentation.

This Presentation may contain forward-looking statements that involve substantial risks and uncertainties, and actual results and developments may differ materially from those expressed or implied by these statements. These forward-looking statements are statements regarding the Company's intentions, beliefs or current expectations concerning, among other things, the Company's results of operations, financial condition, prospects, growth, strategies and the industry in which the Company operates. By their nature, forward-looking statements involve risks and uncertainties because they relate to events and depend on circumstances that may or may not occur in the future. These forward-looking statements speak only as of the date of this Presentation and the Company does not undertake any obligation to publicly release any revisions to these forward-looking statements to reflect events or circumstances after the date of this Presentation.

This Presentation should not be considered as the giving of investment advice by the Company or any of its shareholders, directors, officers, agents, employees or advisers. Each party to whom this Presentation is made available must make its own independent assessment of the Company after making such investigations and taking such advice as may be deemed necessary.

Neither this Presentation nor any copy of it may be (a) taken or transmitted into Canada, Japan, the Republic of Ireland, the Republic of South Africa or the United States of America (each a “Restricted Territory”), their territories or possessions; (b) distributed to any U.S. person (as defined in Regulation S under the United States Securities Act of 1933 (as amended)) or (c) distributed to any individual outside a Restricted Territory who is a resident thereof in any such case for the purpose of offer for sale or solicitation or invitation to buy or subscribe any securities or in the context where its distribution may be construed as such offer, solicitation or invitation, in any such case except in compliance with any applicable exemption. The distribution of this document in or to persons subject to other jurisdictions may be restricted by law and persons into whose possession this document comes should inform themselves about, and observe, any such restrictions. Any failure to comply with these restrictions may constitute a violation of the laws of the relevant jurisdiction.

Note: All references to \$ within this presentation refer to US dollars. Due to rounding, numbers presented throughout this Presentation and other documents may not add up precisely to the totals provided and percentages may not precisely reflect the absolute figures.



Capital Structure (AIM:KEFI)

Share price - 12 mth	0.4p - 1.5p
Current share price	0.83p
Market cap	£33M (\$40M)

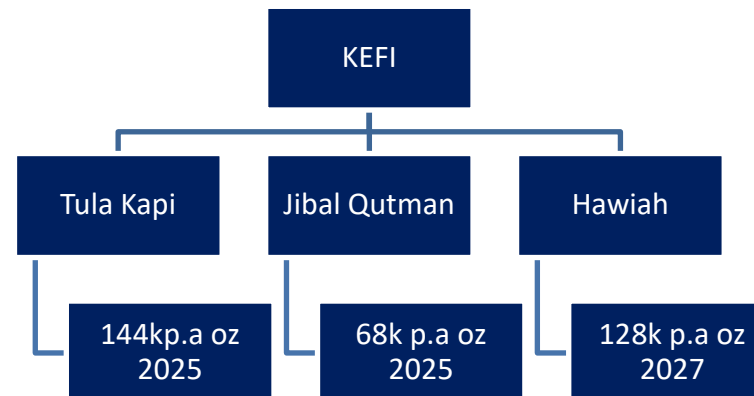
Directors

Harry Anagnostaras-Adams	Executive Chair
John Leach	Finance Director
Mark Tyler	NED
Richard Robinson	NED

Shareholders over 5% excluding nominees

Management	7%
RAB Capital	7%

Snapshot



Project Economics

- Scope to create mid cap gold/copper company from 3 project
- Current resource base 5M oz gold equiv (2.3M net to KEFI)
- In-situ metal content US\$9.6 Bill (KEFI interest US\$4.8 Bill) (current spot)
- Tula Kapi net operating cash flow £75m per annum and NPV8 £207M
- 1.8p and 5p respectively (@ \$2,000 gold)
- Group production profile will be in excess of 340,000 ozs pa in 2027



Development Projects

	Stage	Key Points
Tulu Kapi	Funding	Reserve of 1.0Moz @ 2.1g/t Au Starting at 144koz Au p.a. @ AISC \$935/oz over 7 years
Jibal Qutman	DFS	Resource of 0.7Moz at 0.8g/t Au DFS evaluating OP/CIL development
Hawiah	PFS	Resource of 29Mt @ 0.9% Cu, 0.9% Zn, 0.7g/t Au Potential open pit contains 11Mt of the Resource Similar to AMAK's Al Masane Mine, but larger

Exploration Projects

Tulu Kapi and District	Resource open below open pit with high grades District has several known oxide gold deposits
Jibal Qutman and District	7 known deposits only drilled to a max depth of ~125m 2 new EL's along strike, drilling has recommenced
Hawiah and District	Hawiah open at depth and in Central area Similar Cu-Au mineralisation at nearby Al-Godeyer, the maiden resource of which adds 1Mt to Hawiah open pit
rSaudi Regional	5 EL's recently awarded 2 VMS Cu-Zn-Au prospects, same belt south of Hawiah 2 Au prospects in Lorelon Au-Ag-Cu Belt 1 Au prospect in Al Miyah Mineral District



Q1 2023

- ✓ Costings updated
- ✓ New mining contractor appointed
- ✓ Finance plan agreed
- ✓ All contracting, investment and lending terms updated
- ✓ Definitive agreements with contractors, equity investors, government agencies
- ✓ Lenders update their T&Cs for other parties to confirm documents

Q2-3 2023

- Principal government regulatory confirmation include:
 - Ministry of Finance and Central Bank as regards our banks having equal protections and re offshore banking
 - Ministry of Mines re security, community, tenure and support on various administrative fronts
- Final lender credit approval
- Independent confirmation of compliance with international banking standards with regard to:
 - Upgraded security systems in project area
 - Upgraded community preparations for resettlement and compensation
- Approval at KEFI GM
- Equity funds flow to project

Q4 2023

- Commence construction in dry season after having prepared community and ordered the plant and equipment



Security



micon | mineral industry consultants
INTERNATIONAL LIMITED

Due Diligence



Financial Model



Environmental & Social

BEHRE DOLBEAR

SNOWDEN

Definitive Feasibility Study

Resources & Reserves



Jibal Qutman - Gold

2022

- ✓ EL reissued in November 2022
- ✓ 2 EIs granted along strike

2023

- Drilling to upgrade and expand resources at both Hawiah and nearby Al Godeyer
- Mine planning
- Ore reserves
- Environmental permitting
- Finalise project funding with Saudi Investment Development Fund
- Commence procurement and site works

Hawiah – Copper

2022

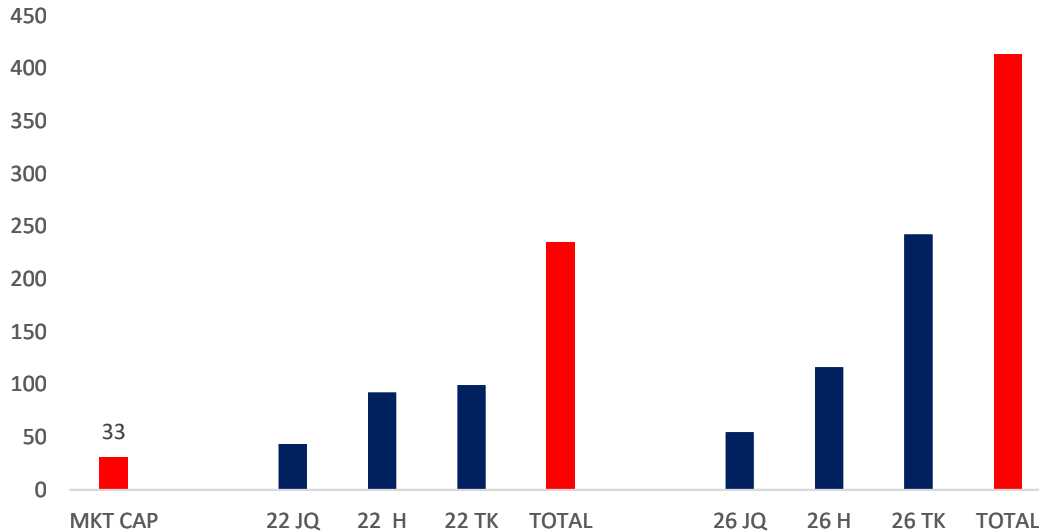
- ✓ Resource increased to 29Mt (0.9% Cu, 0.9% Zn, 0.67g/t Au and 10.1g/t Ag)
- ✓ 5 other ELs granted in same belt

2023

- Complete PFS
- Drilling to upgrade resources
- Metallurgical test work



MKT CAP V ATTRIBUTABLE £NPVs



KEFI stock market capitalisation compared with the NPV's of KEFI beneficial interest in the 3 advanced projects, as at today and as at 2026

In 2026 KEFI expects Tulu Kapi and Jibal Qutman to be entering their second year of production and Hawiah to be in construction

NPV is based on existing known resources as at end-2021. The Company expects to regularly expand its resource base through ongoing exploration during the period, which has the potential to increase the NPVs accordingly

Gold and copper prices are fixed at \$1,641/oz and \$3.61/lb in the NPV calculations

Comments on NPV (Net Present Value) and the Calculations

All three of KEFI's advanced projects report NPV's based on discounting at 8%:

- recoverable JORC Resources as reported up to end 2021
- Consensus metal prices per CIBC at 1 December 2022 (Gold \$1,641/oz, Copper \$3.61/lb, Zinc \$1.15/lb, Silver \$21.54/oz)
- net cash flows after debt service and after taxes, i.e. net cash available for shareholders
- Nil value for potential expansion of project resources or any other discovery

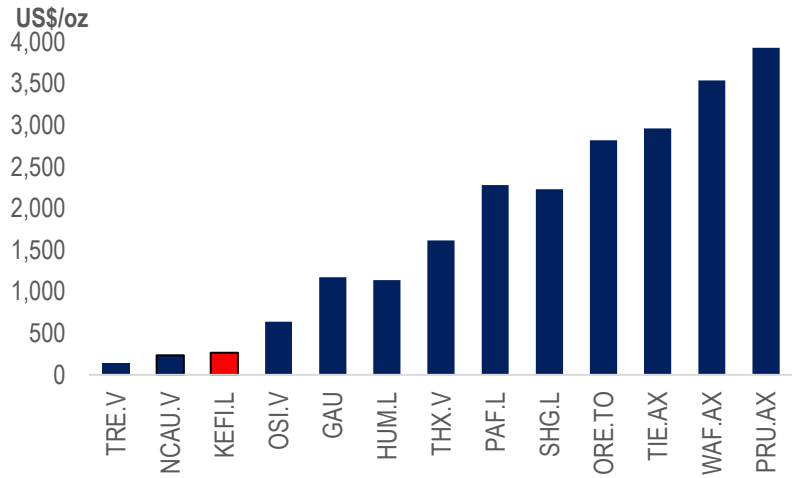
For our most advanced project, Tulu Kapi's planned open pit mine, the modelling was built independently for use by the project syndicate and is based on the DFS (Definitive Feasibility Study) as updated for refinements in consultation with lenders, contractors and input pricing updates generally. KEFI management use this modelling as the basis for analyses for equity investors. We integrated underground mining based on internal Preliminary-Economic-Assessment-level analyses.

KEFI's beneficial interest in each project NPV calculation was assumed to be 80% in TKGM and 30% in JQ & Hawiah. These are assumptions only and the exact beneficial interests will only be finalized upon funding of projects being completed.

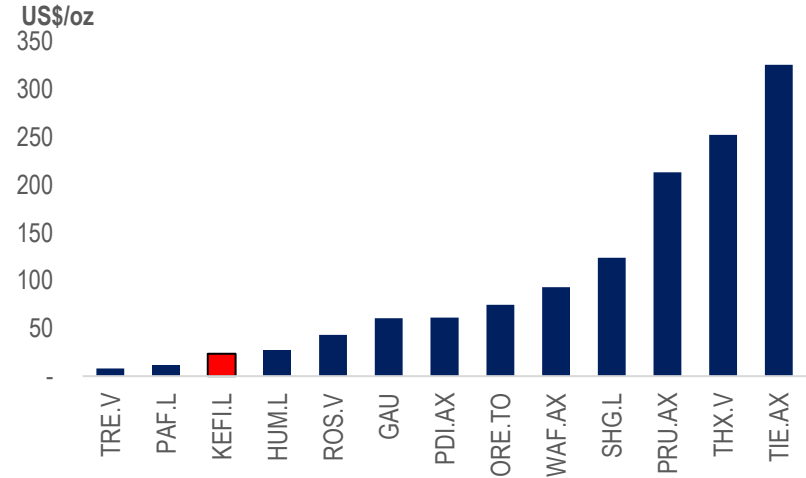
Other KEFI projects are less advanced and are at various stages of feasibility study. Accordingly we present Preliminary Economic Assessments based on models derived with the input of our specialist advisers and consultants.



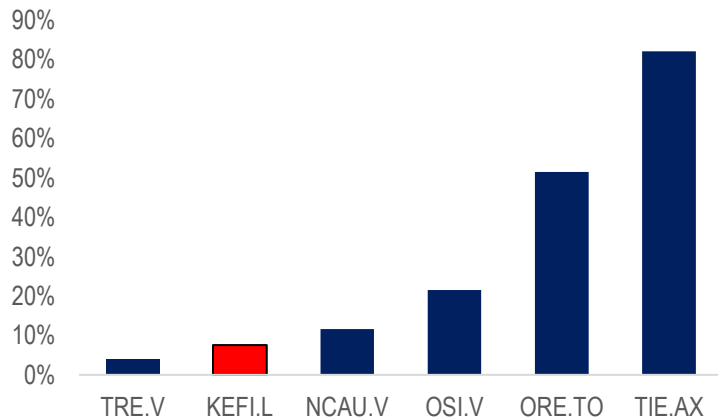
(Source: Orior Capital)



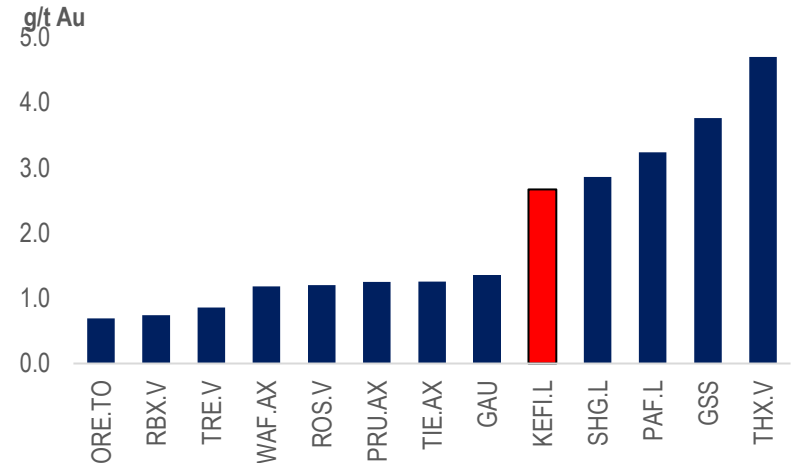
(left) African gold companies
Enterprise Value
per oz of production,
planned or 2022/23
guidance



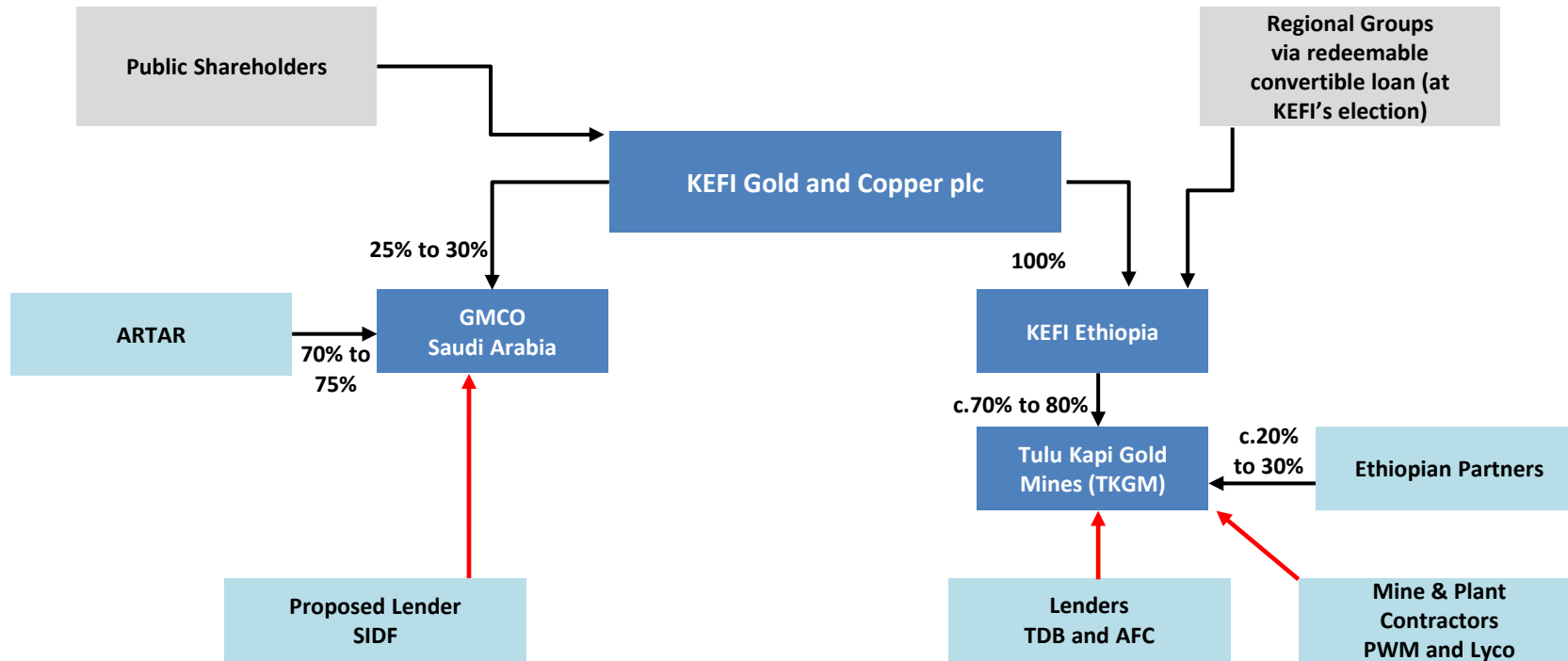
(right) African gold
companies Enterprise
Value per oz of measured
and indicated resource



(left) EV/NPV, selected
African gold companies



(right) African gold
companies, M&I
resource gold grade



The beneficial interest percentages provided on this slide are indicative only as the beneficial interests shall only be finalized upon funding of the projects being completed, The percentages on the slide represent the current expectation of KEFI management.



- Block 14 - Sudan (79.9Mt @ 1.11g/t for 2.85Moz Au)
- Feasibility stage
- Acquired by Perseus Mining for C\$215M in Feb 2022
- Acquisition cost of \$60 per resource oz



“We are also investigating projects across the Nubian and Arabian Shields in North Africa and the Middle East.”

Barrick AGM – 18 March 2022



- Auction of Khnaiguiyah EL in Saudi Arabia in Sep 22
- US\$68M winning bid by Moxico-Ajlan & Bros consortium
- Advanced project with Resource of 25Mt at 4.11% Zn & 0.56% Cu





Harry Anagnostaras-Adams – Executive Chair – B. Comm, MBA, Fellow of Australian Institutes of Management & Company Directors

Harry was founder or co-founder of Citicorp Capital Investors Australia, investment company Pilatus Capital, Australian Gold Council, EMED Mining, KEFI Minerals and Cyprus-based Semarang Enterprises. He has overseen a number of start-ups in those and their related organisations principally through the roles of Chairman, Deputy Chairman or Managing Director. He qualified as a Chartered Accountant early in his career while working with PricewaterhouseCoopers.



John Leach – Finance Director – BA Economics, MBA, CA (Australia & Canada)

John has over 25 years' experience in senior executive positions in the mining industry internationally and is a former non-executive Chairman of Australian-listed Pancontinental Oil and Gas NL. He is a Chartered Accountants in Australia and Canada, and is a Fellow of the Australian Institute of Directors.



Mark Tyler – Non-Executive, Chair Audit and Remuneration Committee – BSc (Eng) Mineral Processing, GDE (Mineral Economics)

Mark has over 20 years of mining finance experience, having participated in mining equity investments at the IDC of South Africa and as the Co Head of Resources Finance and subsequently a resources investment banker in London for Nedbank, a South African bank. He is currently also a resources adviser to Exotix Capital, an emerging markets investment bank and the London representative for Auramet International, an international precious metals financier.



Richard Robinson – Non-Executive – Master of Mineral Economics Queen's University (Can); B. Computer Science University of Natal (South Africa). Non-Executive Director also on Joint Venture Operating Company Boards

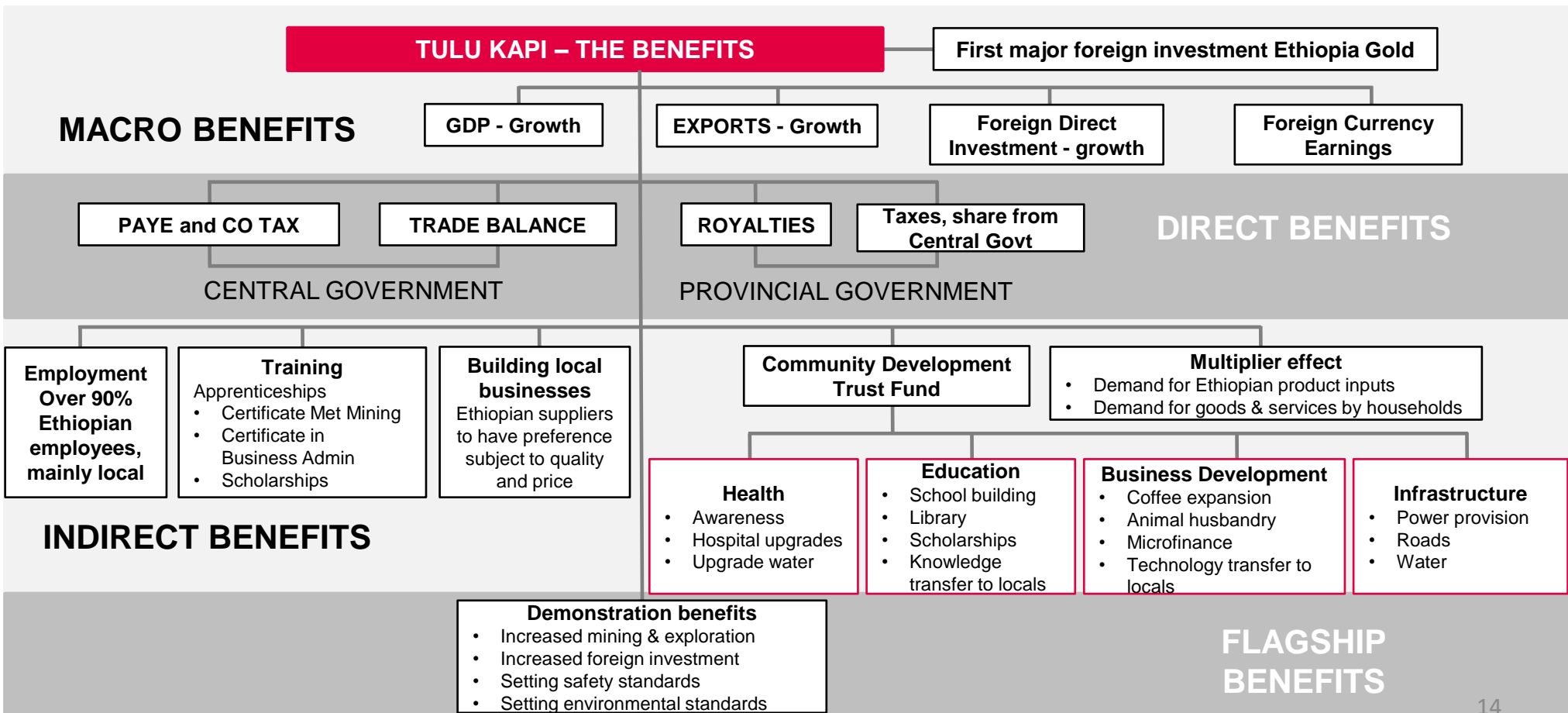
Richard has over 40 years in the gold, platinum, base metal and coal industries, with over 20 years at Gold Fields of South Africa where he had responsibility for gold operations and exploration, base metals and coal operations, and the group commercial activities. His experience also includes being Managing Director of Normandy LaSource, Non-Executive Chairman of the private Swiss multinational Metalor Technologies International and Non-Executive Director of Recylex.

- Ethiopia - Tulu Kapi Gold Mine**
- Full Funding Package Agreed In-Principle**
- Closing Process Underway
 - Financing to Cover Development plus Exploration

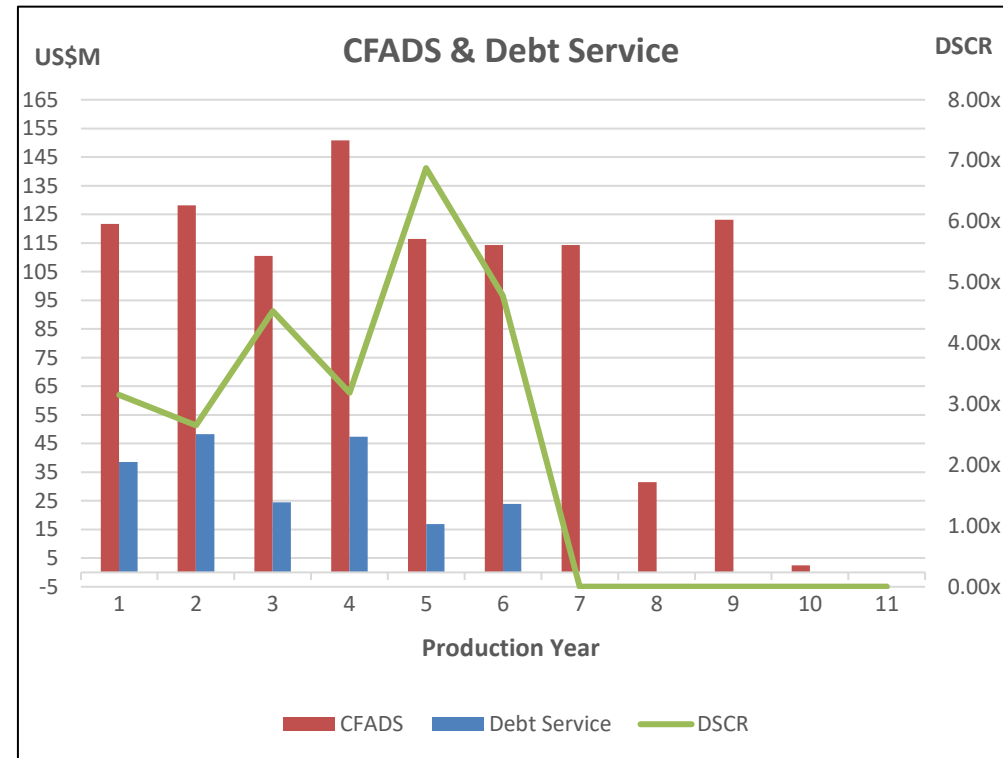
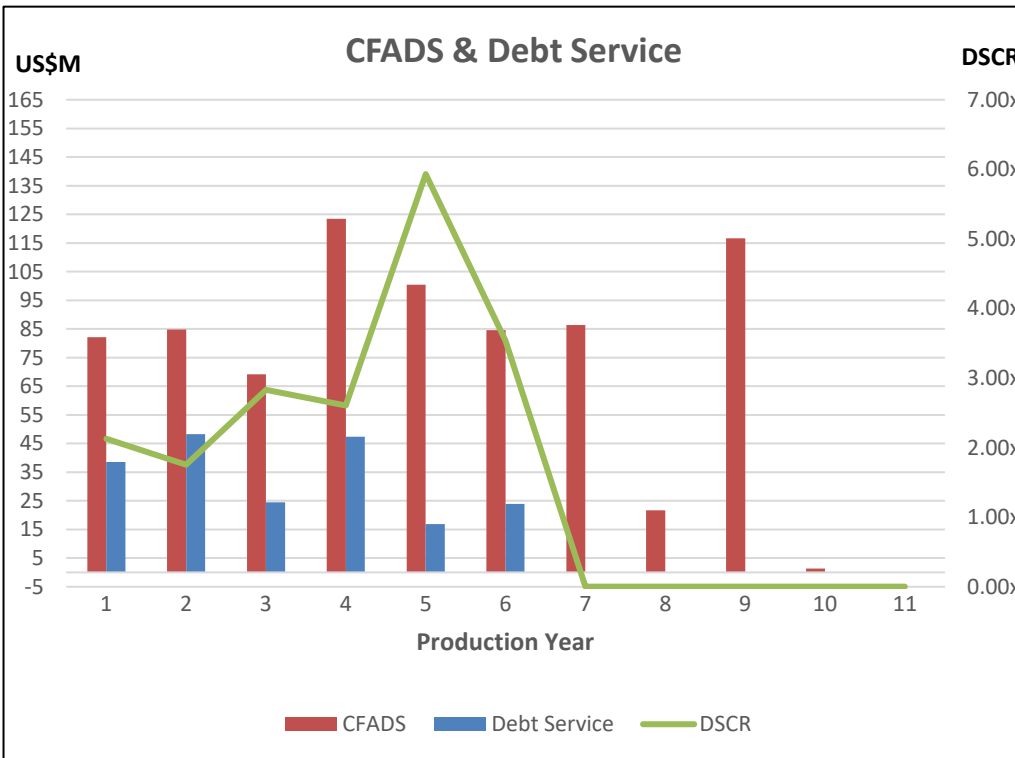


Mining is a long-term activity and has high social impact

Mining represents c.20% of Africa's economic activity and minerals are the continent's second-largest export category



Tulu Kapi Cash Flows To Debt vs Equity At Current Consensus Gold Price \$1,641/oz And at Current Spot Price \$1,940/oz



Above chart shows Tulu Kapi's Cash Flow Projections at \$1,641/oz

- Cash Flow Available for Debt Service (LHS)
- Cash Flow Used for Debt Service (LHS)
- Debt Service Coverage Ratio (RHS)

Above chart shows Tulu Kapi's Cash Flow Projections at \$1,940/oz

- Cash Flow Available for Debt Service (LHS)
- Cash Flow Used for Debt Service (LHS)
- Debt Service Coverage Ratio (RHS)

Tulu Kapi Summary Economics

At Current Consensus Gold Price \$1,641/oz
And at Current Spot Price \$1,940/oz



TK Stats 100% Basis	At Gold \$1,641/oz	At Gold \$1,940/oz
Production Profile		
Material Mined (Thousands Tonnes per Annum)	18,846	18,846
Ore Mined (Thousands Tonnes per Annum)	2,629	2,629
Waste Mined (Thousands Tonnes per Annum)	16,217	16,217
Strip Ratio	6.17	6.17
Average Grade Delivered to Plant (grammes per tonne)	2.15	2.15
Average Quantum Processed (Thousands Tonnes per Annum)	1,989	1,989
Average Recovery in Plant	93.73%	93.73%
Production Thousands Ounces per annum first 7 years	144.3	144.3
IRR & Valuations Based on 2021 Resources Only		
Leveraged NPV8% @ Construction Start ¹ (USD Millions)	145.9	312.6
Leveraged NPV8% @ 2026 (USD Millions)	356.6	547.1
EBITDA (Average of first 7 production years) (USD Millions)	126.7	172.8
Enterprise Valuation @ 3.5x Average EBITDA (USD Millions)	443.5	604.9
Cash Cost Metrics		
All In Sustaining Costs (AISC US\$/oz)	935	956
All In Costs (AIC US\$/oz)	1,177	1,198
Breakeven Cost - inc everything e.g. debt repayment, taxes (US\$/oz)	1,210	1,288
Qtrly Ratios Senior Debt (Pre-Sweep)		
Loan Life Coverage Ratio Min	3.72x	4.73x
Loan Life Coverage Raitio Ave	6.48x	8.30x
Balance Sheet / P&L Ratios		
Net Debt to EBITDA Max	1.41x	0.76x
Free Cash Flow to Interest Min	3.76x	5.07x
Reserve Tail Against Open Pit Only		
Reserve Tail Ratio - All Debt (Pre-Sweep)	22%	22%
Reserve Tail Ratio - All Debt (Post-Sweep)	50%	59%
Cash Balances & Inventory		
Cash Built up in TK over life of mine (USD Millions)	508.1	764.3
Cash at Bank plus gold in ore stocks in TKGM at end of Year 3 (USD Millions)	180.3	280.6
Taxation Metric		
Corporate Income Tax paid by TK (USD Millions)	76.8	163.4
Royalties paid by TK (USD Millions)	136.3	161.2
Total Taxes (excluding social & taxes) (USD Millions)	213.0	324.6

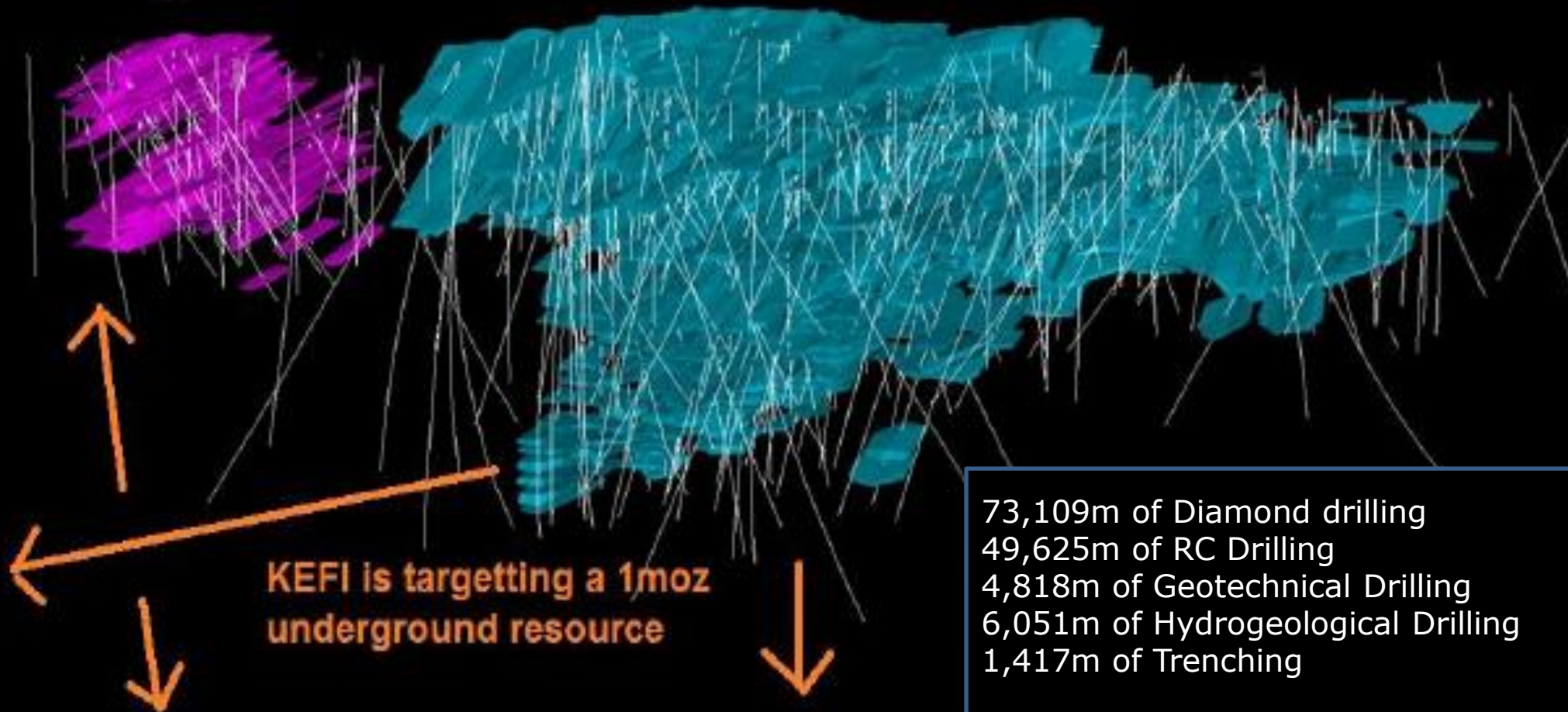
KEFI

GOLD + COPPER

130,000 metres of Drilling
Significant Underground Potential



Tulu Kapi Overview Drilling in Resource Area



KEFI

GOLD + COPPER

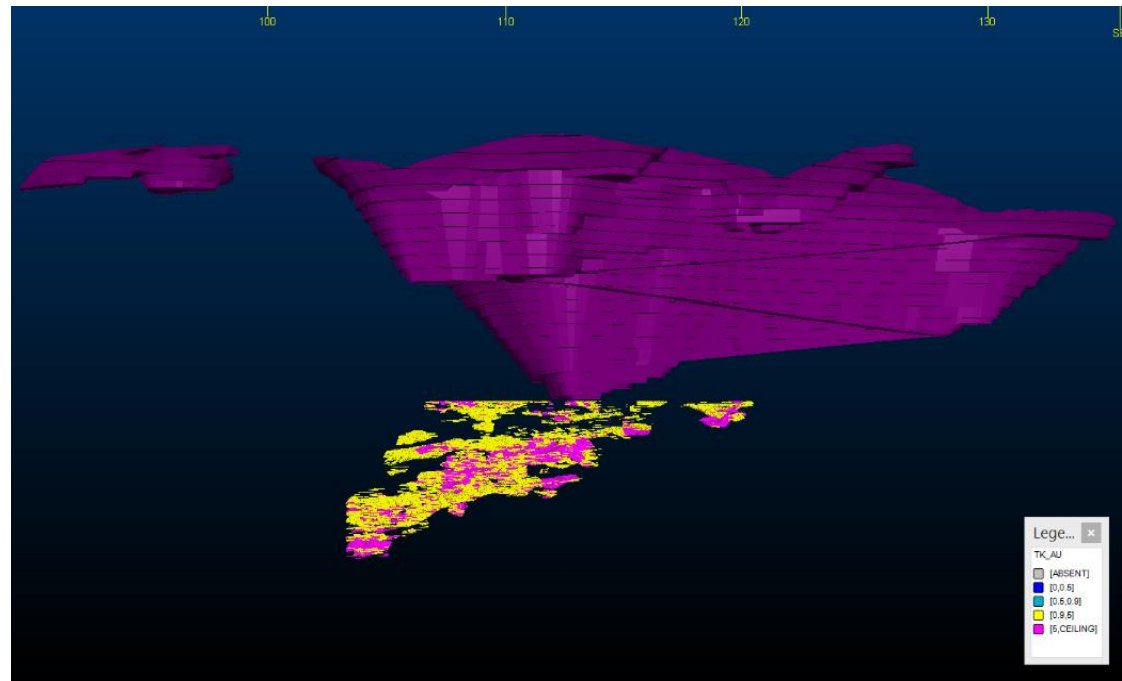
We have Uncovered and Sampled the Deposit



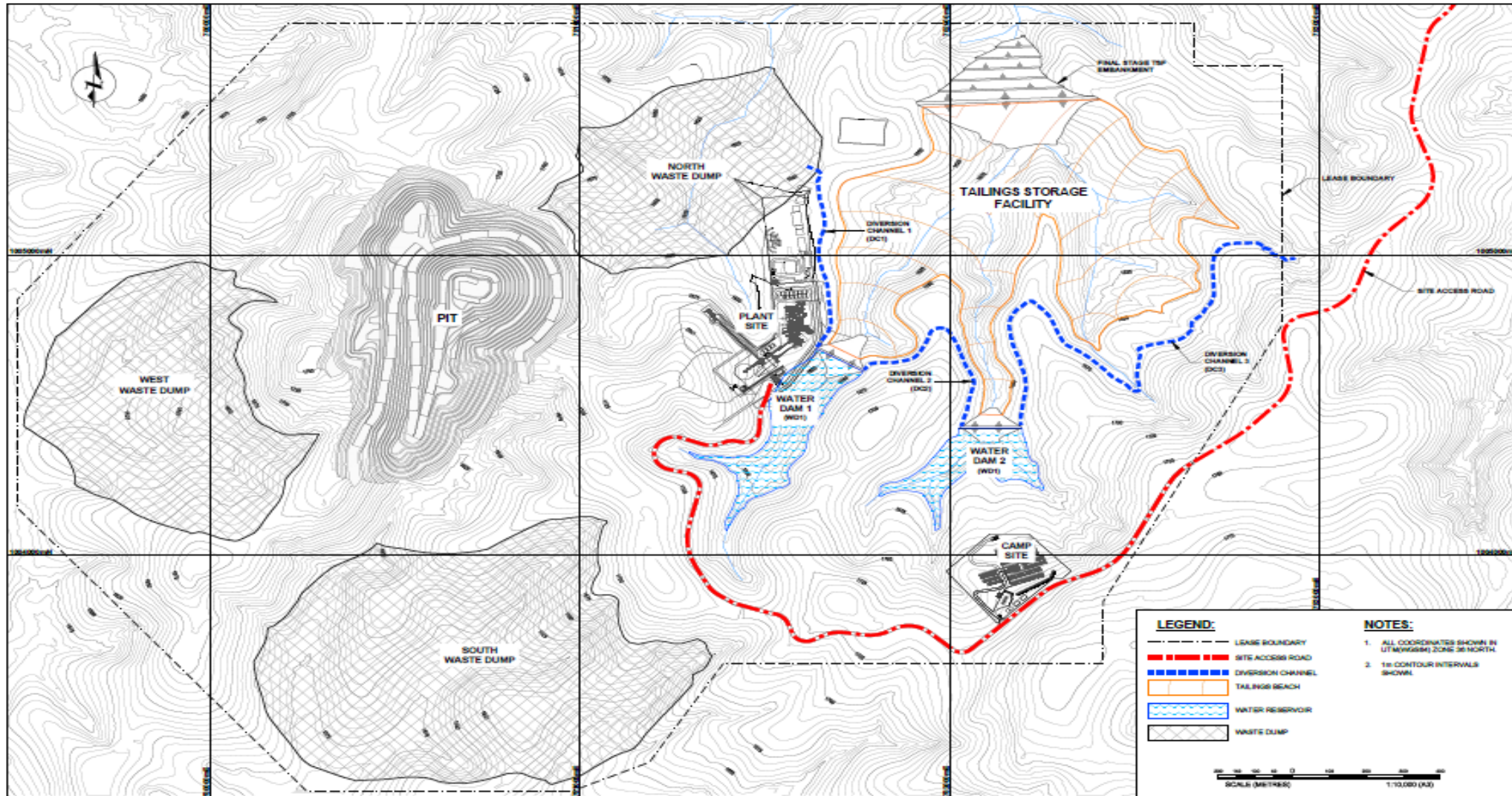


Above: 3-D image of plant designed for Tulu Kapi

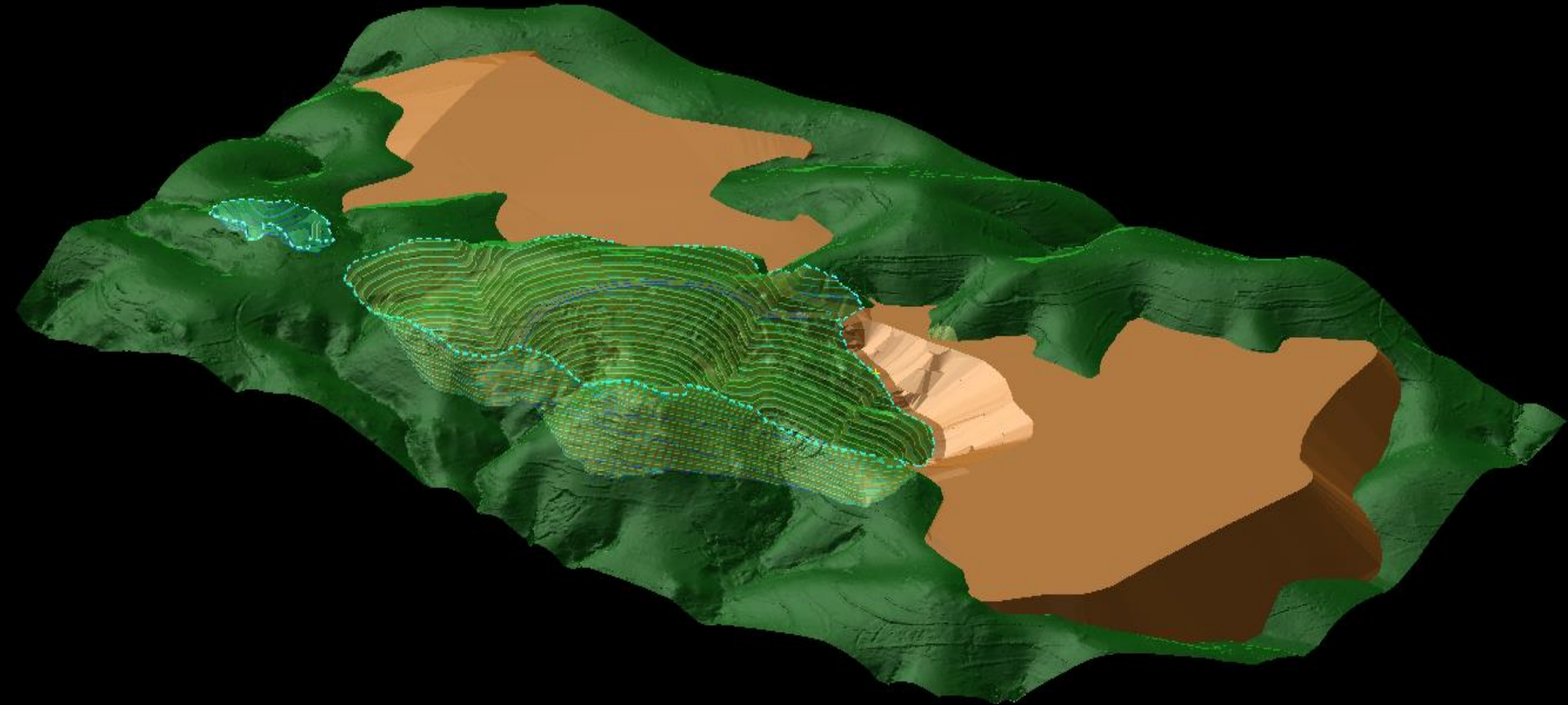
Below: 3-D image of open pit and underground deposit



Lege...	
TK_AU	
[ABSENT]	
[0-0.5]	
[0.5-0.9]	
[0.9-8]	
[8-CEILING]	



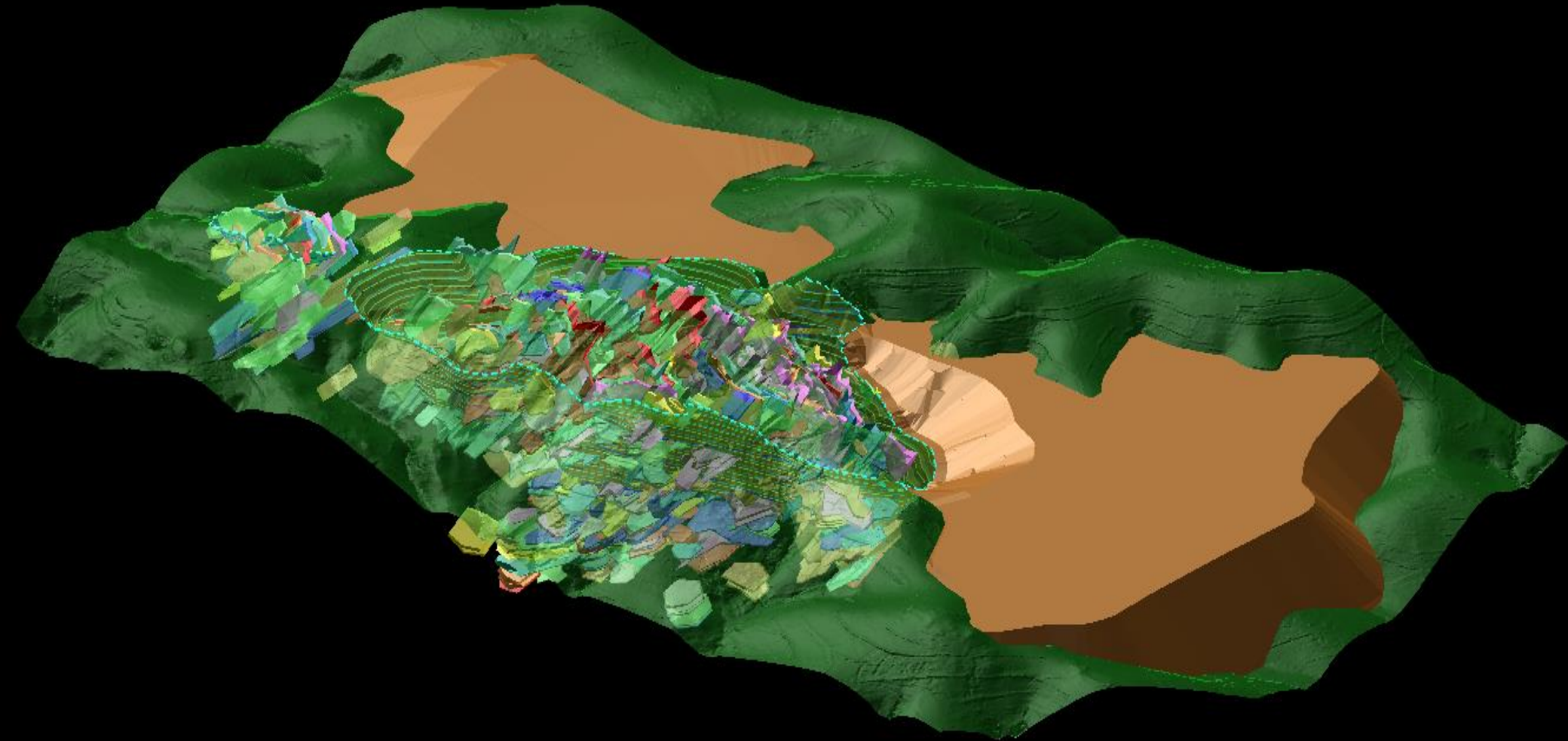
**Tulu Kapi Site Open Pit at Surface
Showing Adjacent Waste Dumps for Revegetation**



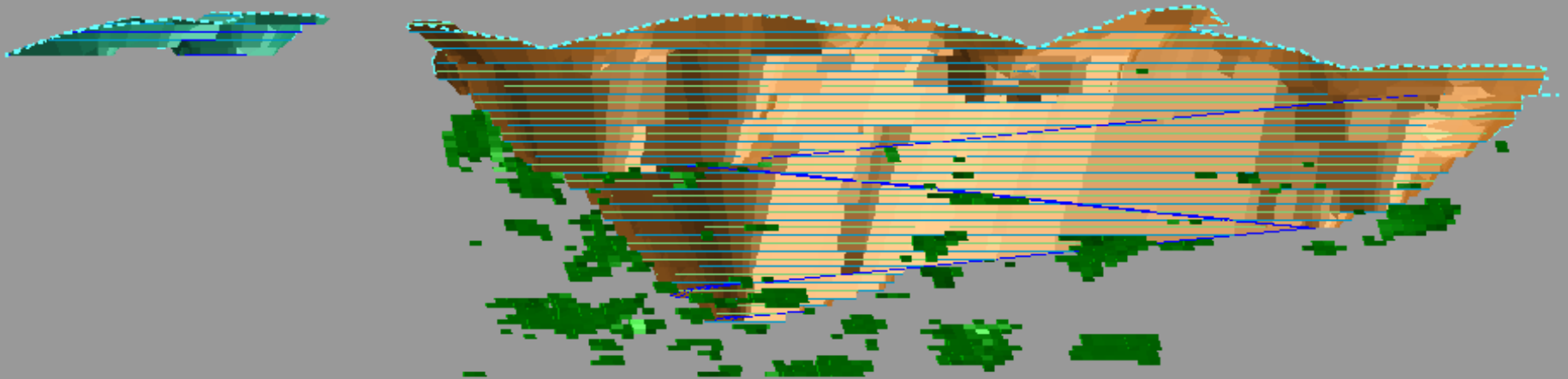
KEFI

GOLD + COPPER

Tulu Kapi Open Pit Unveiling Mineralised Zones Below Surface In-fill Drilling To Commence During Construction



Underground Development to Access Ore Outside Open Pit and to Drill Extensions of the System from Underground



Saudi Arabia

2 Advanced Projects - Jibal Qutman Gold and Hawiah Copper-Gold
Plus a Large Regional Portfolio



2023 Expected Milestones:

Jibal Qutman

- DFS
- Mining Licence
- Financing
- Start Construction
- Expand Resources

Hawiah

- PFS
- Trigger DFS
- Expand Resources

Regional Targets:

- Initial Prospecting

G&M (ARTAR) holds 15 exploration licences and further applications (ELA's) covering +1000 km²



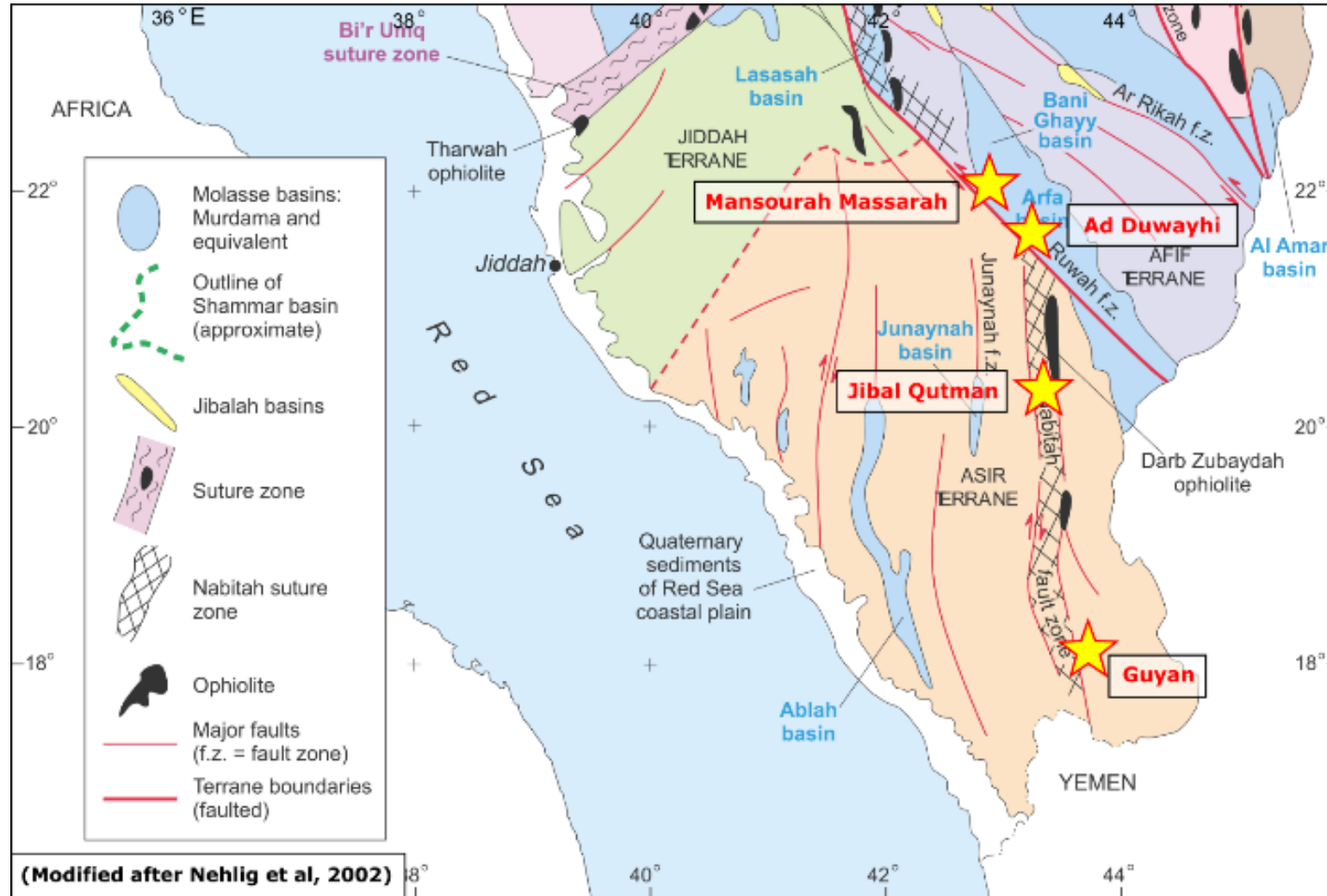
Comparison of Key Advanced Mining Projects in Saudi Arabia



	AMAK	GMCO
Copper-Gold Mine/Project	Al Masane UG	Hawiah OP + UG
Mineral Resources	8.6Mt @ 1.0% Cu, 5.0% Zn, 1.0g/t Au, 38g/t Ag	29Mt @ 0.89% Cu, 0.94% Zn, 0.7g/t Au, 10g/t Ag
Processing Plant	0.8Mtpa Operating	2.0Mtpa PFS
Gold Mine/Project	Jabal Guyan OP	Jibal Qutman OP
Mineral Resources	2.6Mt @ 2.9g/t Au, 242 Koz	28.4Mt @ 0.8g/t Au, 733Koz Au
Processing Plant	0.3Mtpa Operating	2.0Mtpa DFS

- AMAK (Al Masane Al Kobra Mining Company) is listed on Saudi Stock Exchange and has a market cap of \$1.3 billion
- KEFI is listed on AIM with a market cap of only \$38 million
- KEFI owns 30% of GMCO and also owns the 1.7Moz Tulu Kapi Gold Project
- Hawiah has lower grades to Al Masane but a 3X larger resource
- Jibal Qutman resource has 3X more ounces of gold

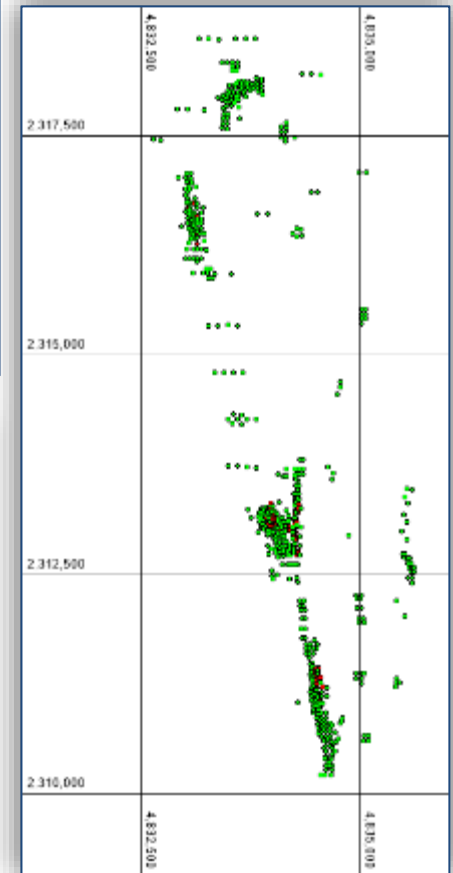
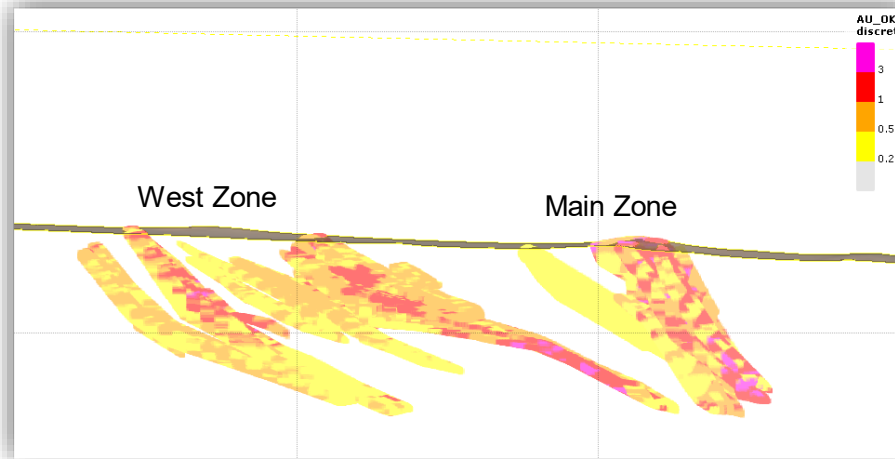
- Jibal Qutman is located in the southern portion of the Nabatah Suture zone (Nabatah-Tathlith), a shield wide belt hosting multiple ancient gold mines and known occurrences, as well as the major Ad Duwayhi and Mansourah-Massarah Gold Mines.
- 2012-2016 exploration programme defined a total resource of 733Koz Au (indicated and inferred).
- Three EL's cover 270km² of prospective strike
- Proposed Mining Licence application area covers 26km²
- Within this area there are several ancient workings and prospects for gold, with grab samples from the area showing areas or high-grade gold mineralisation.

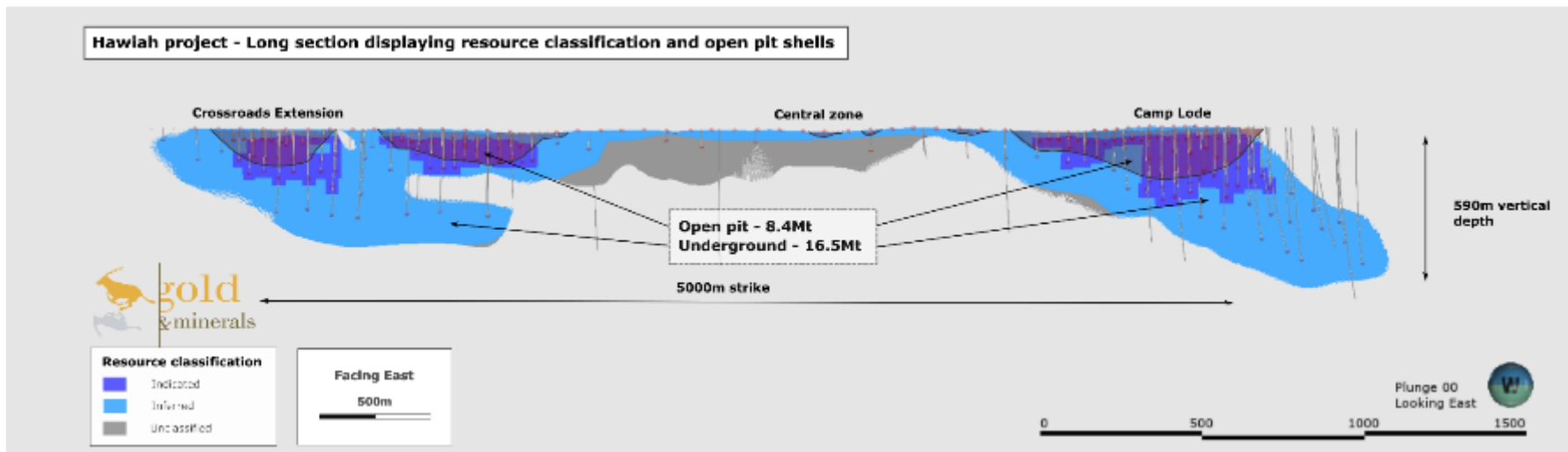


- Typical shear-hosted orogenic gold deposit comprising a weathered oxide zone and lower un-weathered fresh ore body
- Resources are currently constrained to 7 open-pits
- Resource drilling has so far only been explored to a depth of ~125m and the orebody is open at depth

Table 1-1 Jibal Qutman Mineral Resource estimate

Cut-off	Grade bin	Tonnes	Au	Grams	Oz
	0.0 -> 0.2	145,457	0.16	23,297	749
	0.2 -> 0.5	9,995,777	0.38	3,782,392	121,607
	0.5 -> 1.0	12,366,668	0.69	8,549,568	274,875
	1.0 -> 5.0	5,879,576	1.71	10,034,378	322,613
	5.0 -> Ceiling	67,626	6.07	410,595	13,201
	Total	28,455,104	0.80	22,800,230	733,045
0.2	0.2 -> 999	28,309,647	0.80	22,776,933	732,296
0.5	0.5 -> 999	18,313,869	1.04	18,994,541	610,689





- Major greenfield discovery made in September 2019
- 42,000m drilling programme over 3 years
- Mineral Resource of:
29Mt at 0.9% copper, 0.9% zinc, 0.67g/t gold and 10.1g/t silver
- Current cost per Gold-equivalent discovery oz ~ US\$6
- Further near-term resource expansion – Al Godeyer, Hawiah Oxides and Central Zone
- Hawiah now ranks as one of the top 3 major base metal projects in Saudi Arabia and is targeted to be brought into production in 2027

	2021	2022
Total Resource	24.9	29.0
Cu Grade (%)	0.9%	0.9%
Au Grade (g/t)	0.62	0.67
Indicated Resource (Mt)	10.9	12.4
Inferred Resource (Mt)	14.0	16.5
Open Pit Resource (Mt)	8.4	11.1
Open Pit Grade (Cu %)	0.9%	0.9%
Open Pit Grade (Au g/t)	0.74	0.81
Oxide Resource (Mt)	0.7	1.2
Oxide Grade (Au g/t)	1.5	2.1
Transition Zone Resource	2.3	2.7
Transition Zone Grade (Cu %)	1.3%	1.2%

MRE as reported by MSA (Dec 2022) and SRK (UK) Dec 2021

Note 1 - Resource Price (2022 MRE reported by MSA) = \$9350 copper, \$3,300 zinc, \$1820 gold and \$26 silver

Note 2 - Resource Price (2021 MRE reported by SRK (UK)) = \$9200 copper, \$3,000 zinc, \$1820 gold and \$25 silver

KEFI

GOLD + COPPER

Thank You



Email: info@kefi-goldandcopper.com

 [@kefiminerals](https://twitter.com/kefiminerals)

 [KEFI Gold and Copper](https://www.linkedin.com/company/kefi-gold-and-copper) Website: kefi-goldandcopper.com