

24 August 2021

KEFI Gold and Copper plc
Hawiah Copper-Gold VMS Project Update

Appendix 2: Diagrams for Hawiah Project

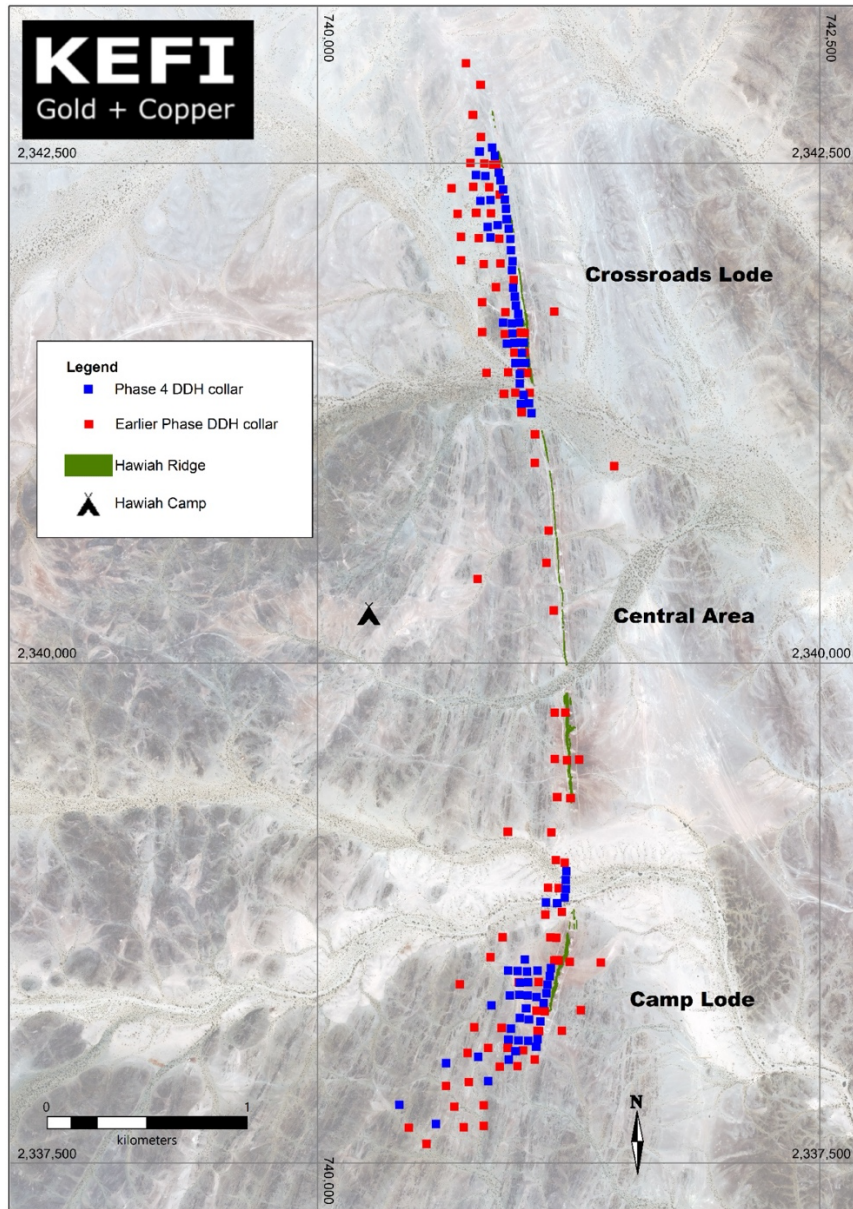


Figure 1 - Plan view of Hawiah Project showing location of diamond drill hole collars

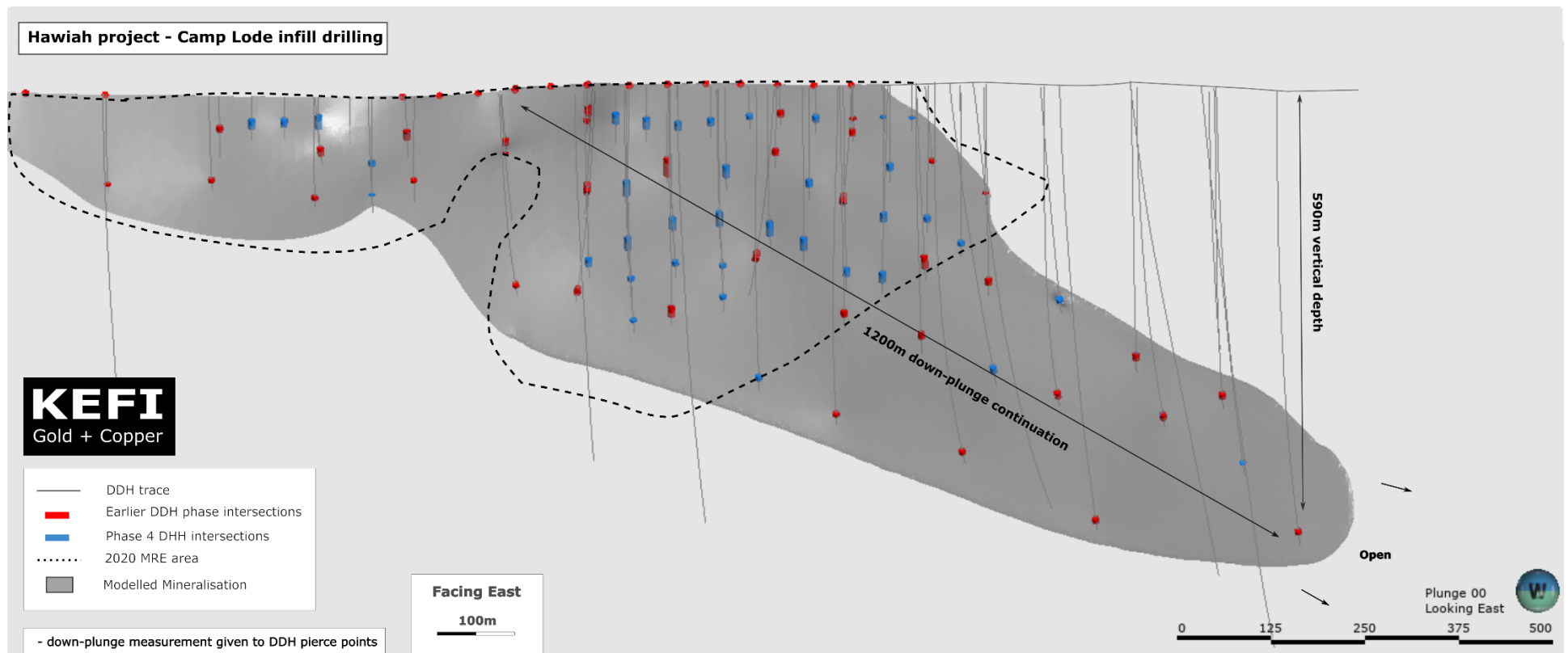


Figure 2 - Long section of the Camp Lode facing east with Phase 4 (blue) and early phase (red) massive sulphide intersections highlighted

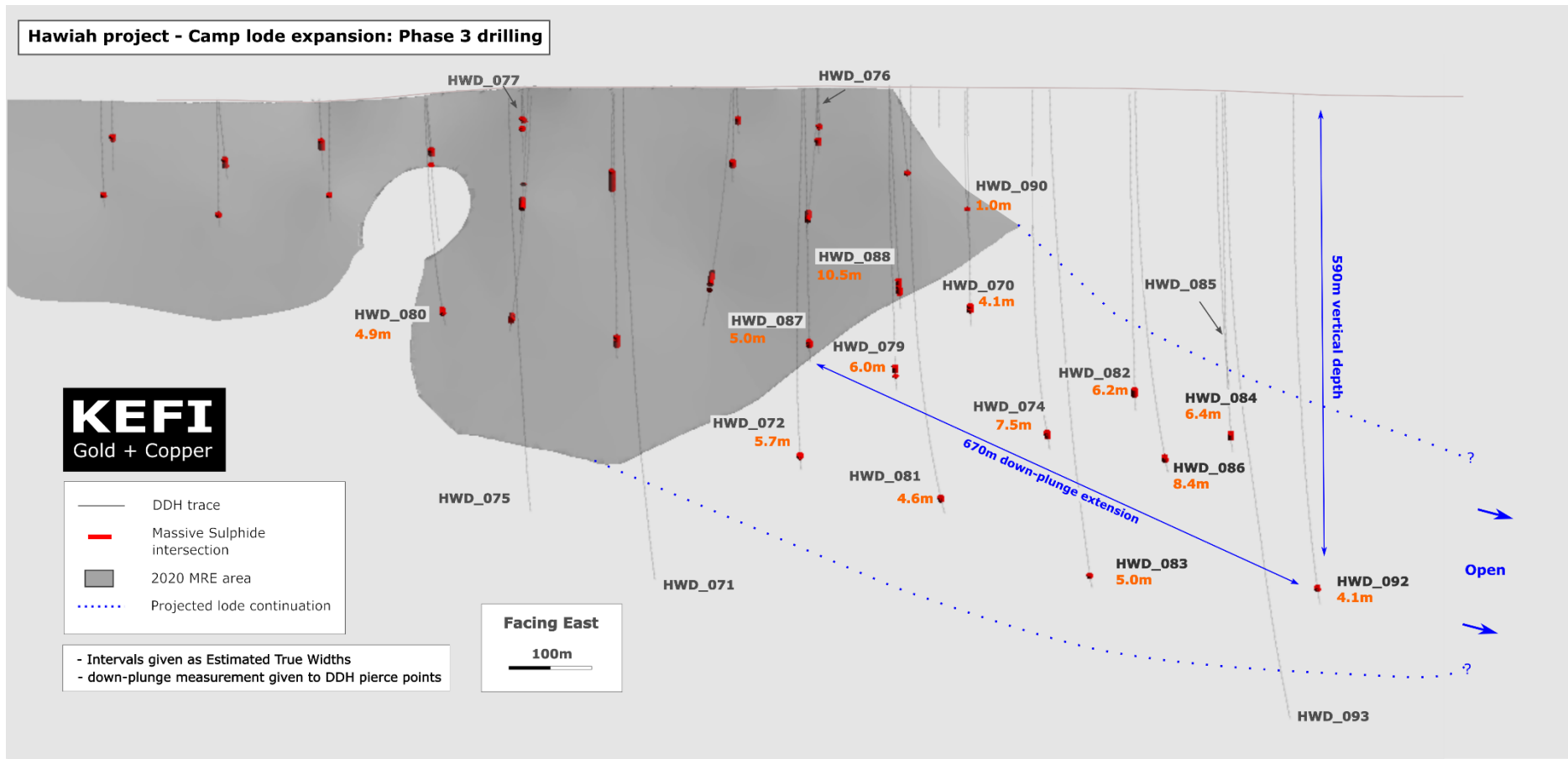


Figure 3 - Long section of the Camp Lode showing Phase 3 drilling that massive sulphide intersections highlighted that extended known mineralisation 670m down plunge

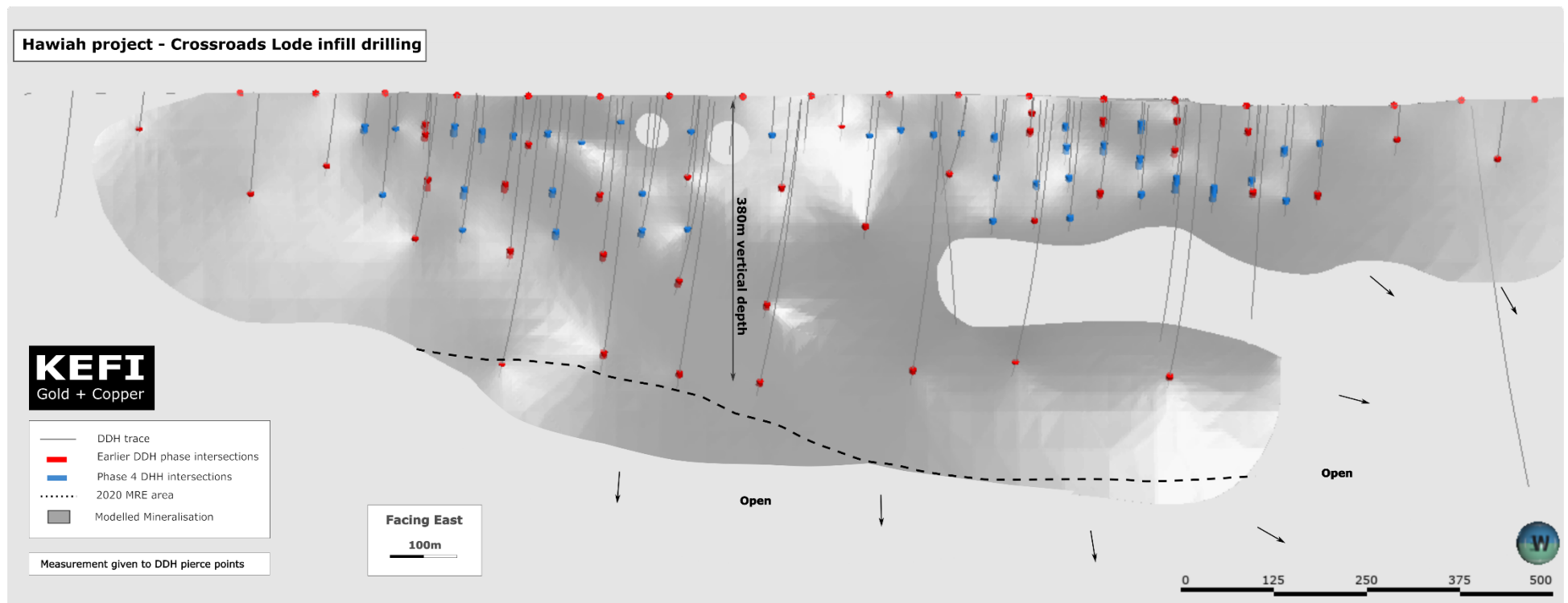


Figure 4 - Long section of the Crossroads Lode facing east with Phase 4 (blue) and early Phase (red) massive sulphide intersections highlighted